

## Room

## Size

### Ground floor

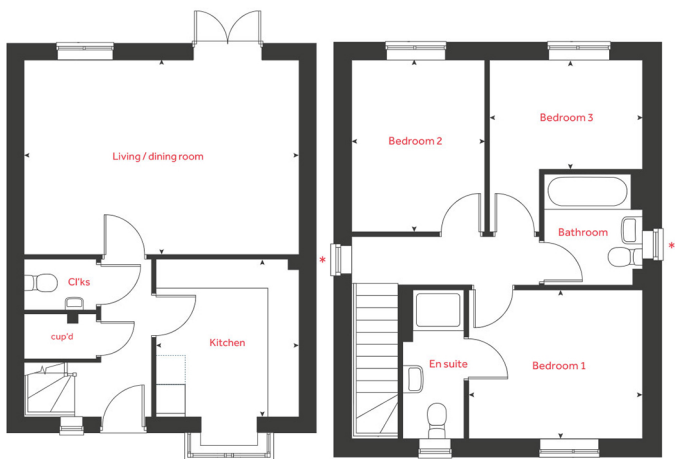
Living room	5.70m x 3.95m	18'8" x 12'11"
Kitchen/Dining area	3.29m x 2.95m	10'9" x 9'8"

### First floor

Bedroom 1	3.45m x 3.07m	11'4" x 10'1"
Bedroom 2	3.21m x 2.60m	10'6" x 8'6"
Bedroom 3	3.03m x 2.01m	9'11" x 6'7"

---

## Floorplan



Plots: 217, 218